

CABLE MANAGEMENT

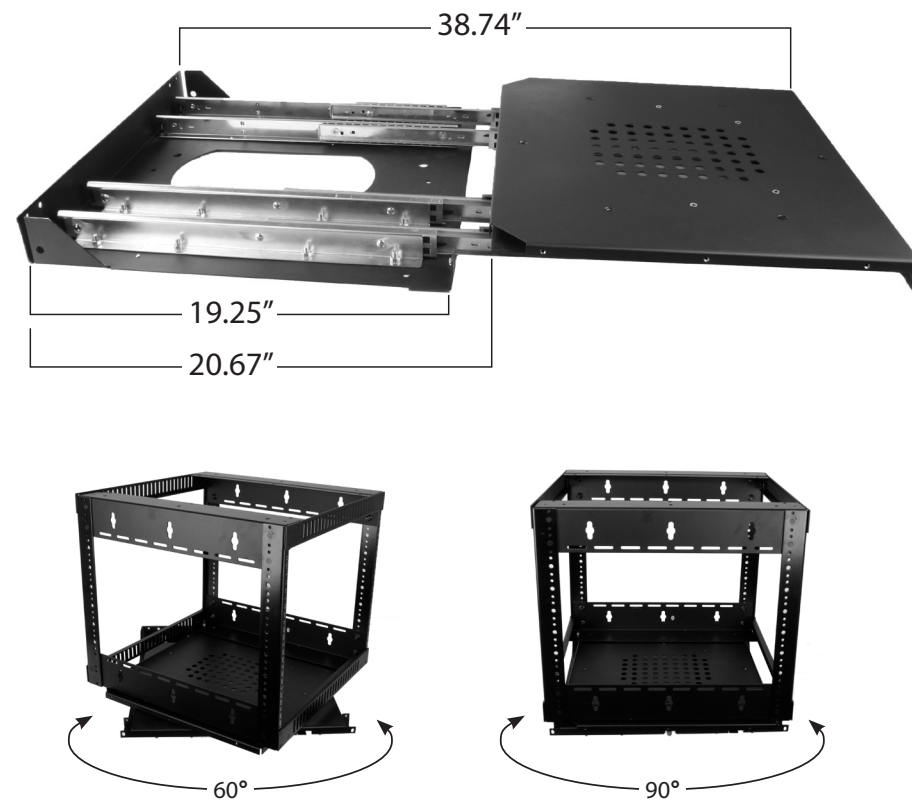
1. Determine direction of rack rotation and wiring plan for this direction. Select one side of rack for signal cables, and the opposite side for power cables. Fully extend rack and rotate 90 degrees in intended direction. Lace cables ensuring they are fairly taut. This will help ensure that the service loop will be the correct length and not be pinched when closing the rack.

NOTE: Wiring this way will keep the rack rotation in the direction originally selected when cabling is complete.

Cable Management Tip:

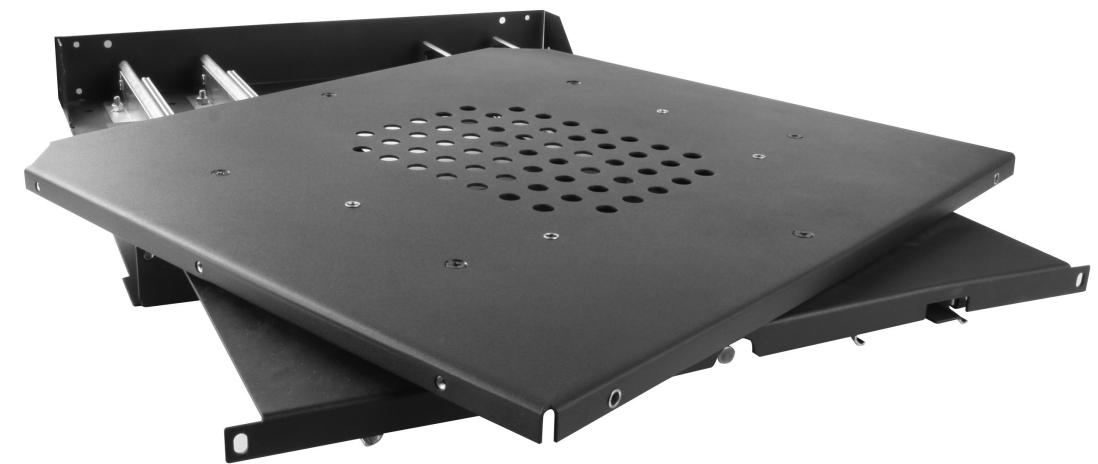
Tie your cable bundles at least every 6" - 8". This allows cable bundles to lay neatly together when rack is in the closed position.

DIMENSIONS



engineered by
Snap
av

SR-RACKSLIDE-300 Strong™ Metal Rack Sliding Base



INSTALLATION MANUAL



Lifetime Limited Warranty

All Strong™ products have a Lifetime Limited Warranty. This warranty includes parts and labor repairs on all components found to be defective in material or workmanship under normal conditions of use. This warranty shall not apply to products which have been abused, modified or disassembled. Products to be repaired under this warranty must be returned to SnapAV or a designated service center with prior notification and an assigned return authorization number (RA).

For Technical Support : 1.866.838.5052

PARTS INCLUDED:

- (1) Rackslide Base
- (1) Rack Attachment Plate
- (2) Blank Finish Plates (1 for each series rack)
- (2) Side Mounting Plates
- (22) Assembly Screws
- (6) 5/16" x 2 1/2" Lag Bolts
- (6) 1/2" Washers
- (6) Concrete Anchors

TOOLS NEEDED:

- No. 2 Phillips Screwdriver
- 1/2" wrench
- 1/4" Drill Bit

WARNING: Maximum load is 300 lbs.

TIPPING HAZARD:

Host enclosure (cabinet) MUST be adequately secured to the floor or wall. This prevents the cabinet from falling forward when rack is pulled out. Mount 1/2 of equipment weight in lower 1/3 of rack.

NOTE: SR-CAB-8U-/10/12/14U are to be built separately and installed after SR-RACKSLIDE-300 base is installed, allowing off-site equipment integration.

INSTALLATION

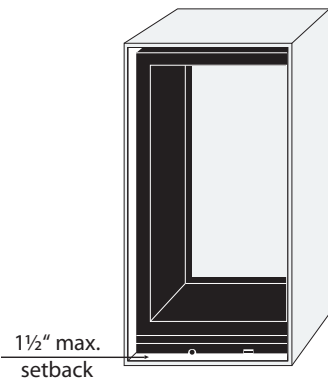
MOUNTING THE RACK SLIDE

Maximum suggested setback of base from opening is 1 1/2" (more setback will hinder ability to rotate).

1. Pre-drill holes in floor or cabinet bottom using 1/4" drill bit. Attach the base to floor or cabinet bottom at the two rear hole locations using (2) 2-1/2" lag bolts and washers (Fig. 1). The Rackslide base can rest flush with the wall but must be completely flat against the floor or cabinet bottom. Should interference from surrounding millwork occur, it may be necessary to fine tune the mounting location (remove the preliminary mounting points and adjust as necessary).

2. With base partially installed, test slide and rotation operation of the base. Slide should pull away from lower base and fully extend with Slide Lock (Fig. 2) engaging and preventing you from pushing slide back. Next, check the swivel. Press in on Swivel Lock (Fig. 3) and spin the top left and right. The top will self lock at 60 (Fig. 4) and 90 degree (Fig. 5) rotations. To close slide-base, press down on the Slide Lock and push the slide-base back.

3. If operation of slide is satisfactory, Secure the base by fastening the remaining (4) lag bolts and washers. VERY IMPORTANT - Use all the mounting points when affixing the base to the host enclosure.



1 1/2" max. setback

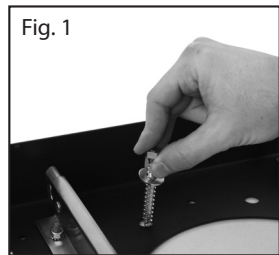


Fig. 1

Slide Lock



Fig. 2

Swivel Lock

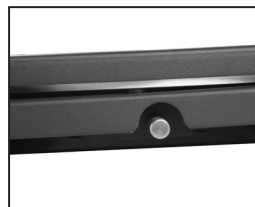


Fig. 3

60° Rotation

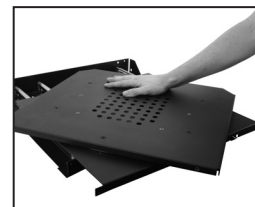


Fig. 4

90° Rotation



Fig. 5

ATTACHING THE RACK

The mounting method for each rack series is different; refer to the instructions below for the rack series being installed .

SR-CAB SERIES

1. Place the rack onto sliding base (EasyGlide™ runners MUST be removed).
2. Align the rack towards the rear of the slide. Note that the front of the rack will overhang the slide (Fig.6).
3. Starting with the right rear, align the rack mounting hole over the slide plate mounting hole (Fig.7). Insert a rack screw; leave the screw loose until final step.
4. Align the left front rack mounting hole over the slide plate mounting hole and insert a rack screw (Fig.8). Insert rack screws into the remaining 2 locations in the order described in (Fig.8) and tighten all screws.
5. Re-test operation of slide-base per Step 2 to validate (Fig. 9).
6. Once installation is completed and rack is in closed position, install the Blank Finish Plate (B) with Assembly Screws to cover the face of the RACKSLIDE and rack base for a cleaner finish (Fig. 13).

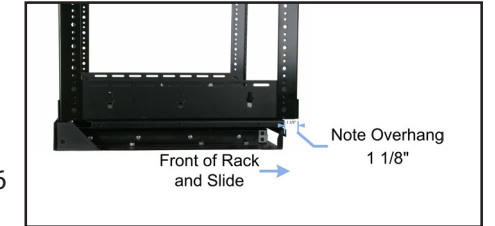


Fig. 6

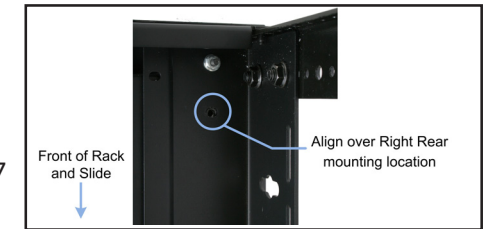


Fig. 7

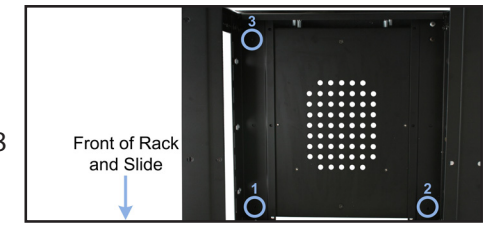


Fig. 8



Fig. 9

SR-CS-RACK SERIES

1. Place the rack onto sliding base (rack casters MUST be removed).
2. Starting on either side, remove rack assembly screws from base of the rack (Fig. 10). Next, line up (1) Rack Attachment plate with the holes in the slide-base and holes in the rack. Using rack Assembly Screws provided, attach Rack Attachment Plate (Fig. 11).
3. Follow same procedure for opposite side.
4. Re-test operation of slide-base per Step 2 to validate (Fig. 12).
5. Once installation is completed and rack is in closed position, install the Blank Finish Plate (A) with Assembly Screws to cover the face of the RACKSLIDE and rack base for a cleaner finish (Fig. 13).



Fig. 10



Fig. 11



Fig. 12



Fig. 13